



RHINO-RACK

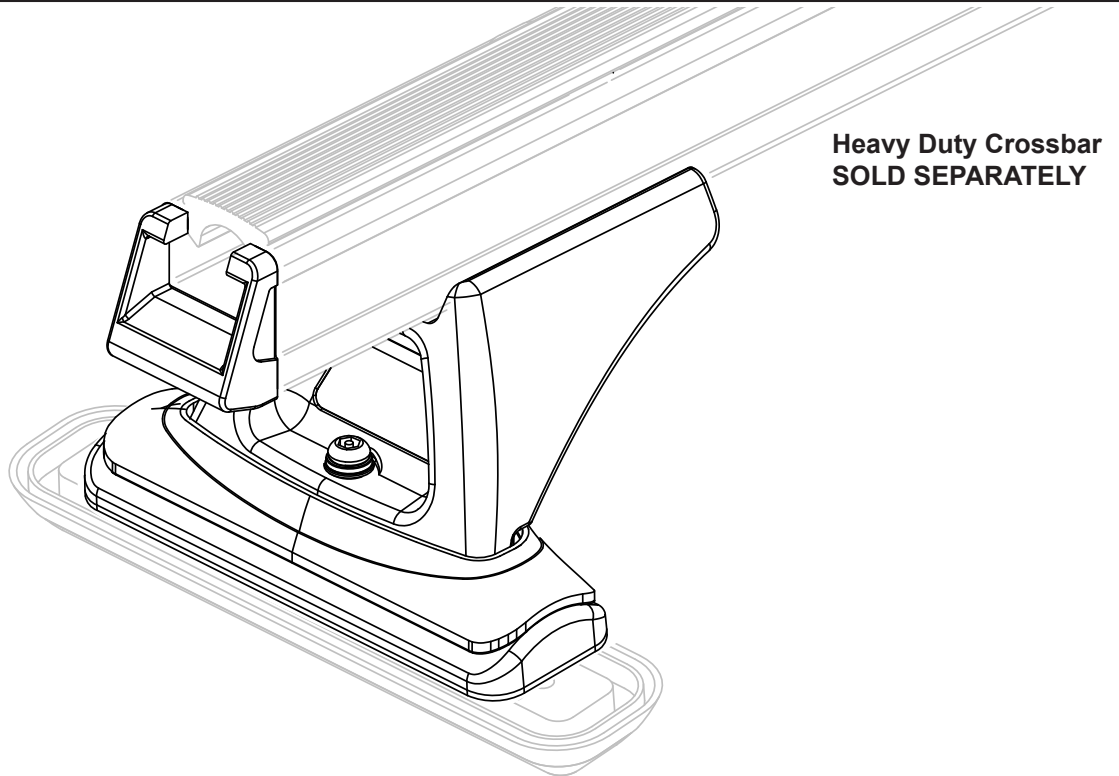
Aerodynamic & Heavy Duty Roof Rack Systems

CONTROLLED

RFMPC2 Rhino Fixed Mount Canopy System (with RLCP leg)

Important: Please read these instructions carefully prior to installation.
Please refer to your fitting instruction to ensure that the RFMPC2 is installed in the correct locations.
Check the contents of kit before commencing fitment and report any discrepancies.
Place these instructions in the vehicle's glove box after installation is complete.

Layout



Maximum carrying capacity:

Please refer to your vehicle manufacturers handbook for maximum carrying capacity of your roof racks. Always use the lower of the two figures. Load must be evenly distributed over the crossbars. **Warning:** Do not attempt to fit the RFMPC2 to your vehicle unless you fully understand this fitting instructions. Please direct any questions regarding fitting to the dealer from where the RFMPC2 was purchased. **Use only non-stretch fastening ropes or straps.**

Recommendations:

It is essential that all bolt connections be checked after driving a short distance when you first install your roof racks and RFMPC2. Bolt connections should be checked again at regular intervals (once a week is enough, depending on road conditions, usage, loads and distances travelled). You should also check the roof racks and RFMPC2 each time they are re-fitted. Always make sure to fasten your load securely. Please also ensure that all loads are evenly distributed and that the centre of gravity is kept as low as possible. Long loads (e.g. canoes and kayaks) must be secured front and rear with non-stretch fastening ropes or straps. **Roof racks must be removed when putting vehicle through an automatic car wash.**

Caution: The handling characteristics of the vehicle changes when you transport a load on the roof. For safety reasons we recommend you exercise extreme care when transporting wind-resistant loads. Special consideration must be taken into account when cornering and braking.

Note for Dealers and Fitters

It is your responsibility to ensure this fitting instruction is given to the end user or client

Rhino-Rack
3 Pike Street, Rydalmere,
NSW 2116, Australia.
(Ph) (02) 9638 4744
(Fax) (02) 9638 4822

Document No: R151
Prepared By: Andy Wana
Authorised By: Chris Murty

Issue No: 01
Issue Date: 11/11/2011

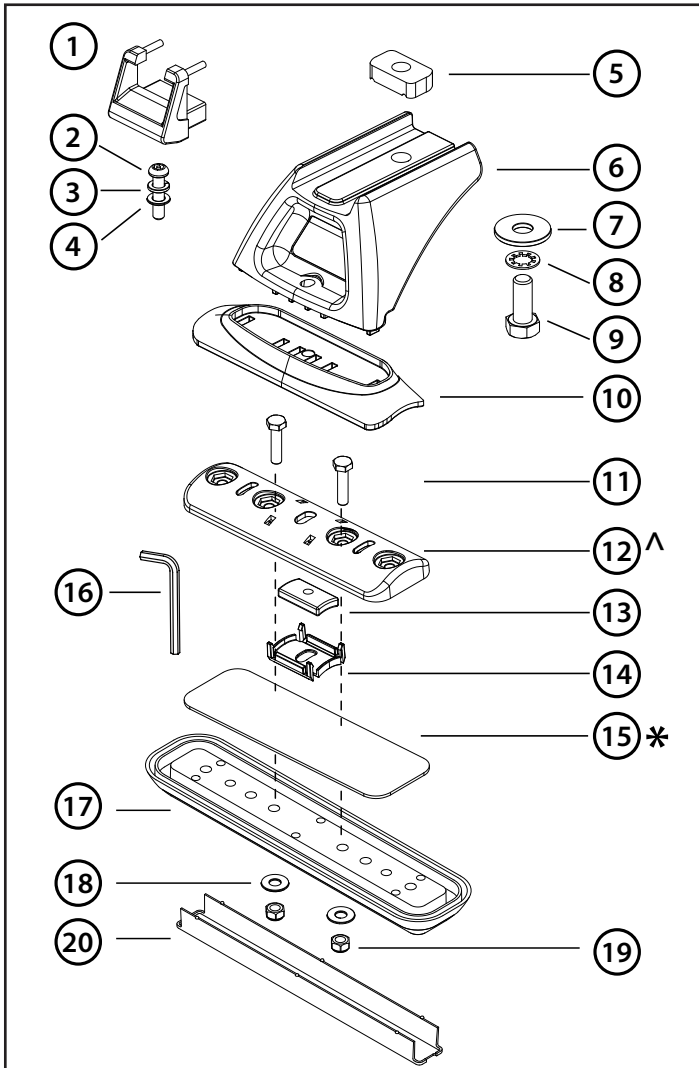
These instructions remain the property of Rhino-Rack Australia Pty Ltd and may not be used or changed for any other purpose than intended.



RFMPC2 Rhino Fixed Mount Canopy System (with RLCP leg)

Parts List

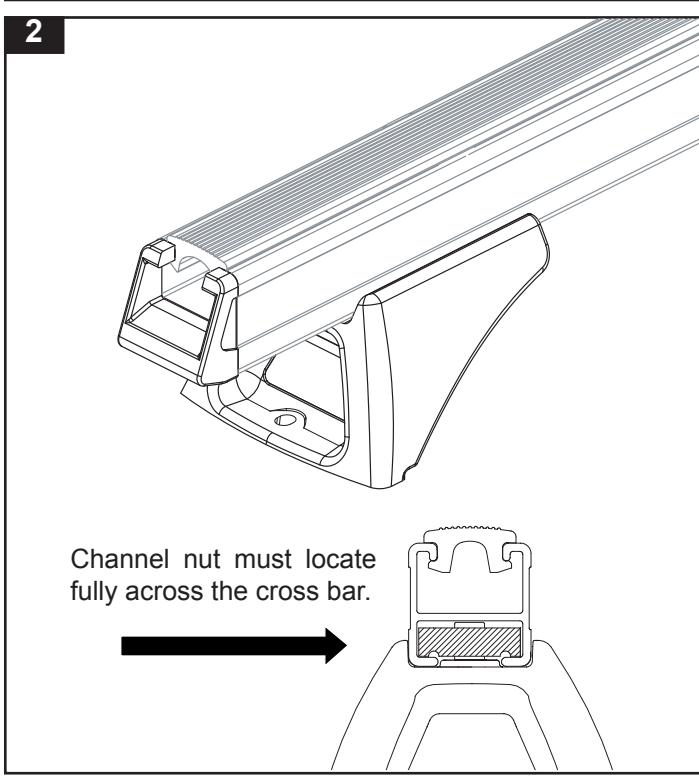
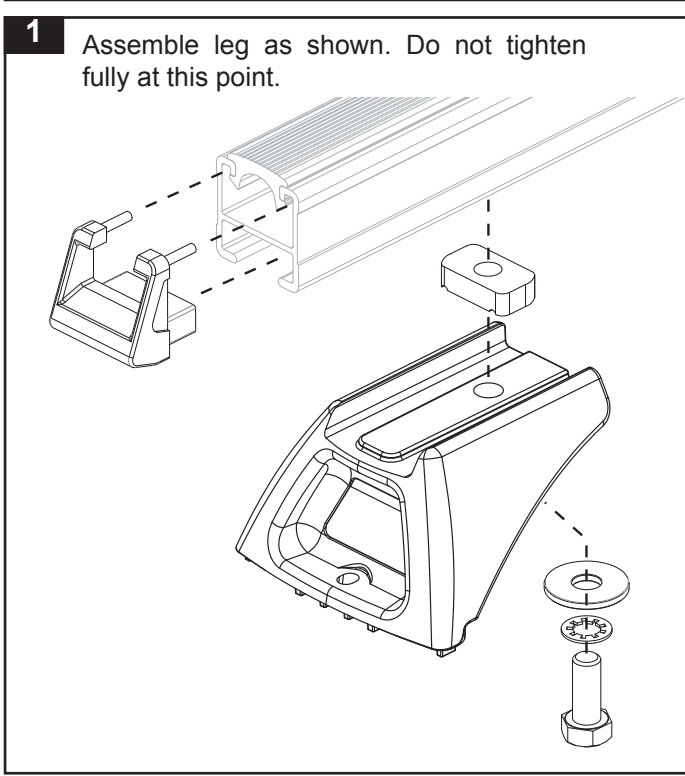
Item	Component Name	Qty	Part No.
1	Bar End Cap	2	M002
2	M6 x 27mm Button Security	2	B063
3	M6 Spring Washer	2	W004
4	M6 Flat Washer	2	W003
5	M10 Channel Nut	2	N024
6	RCP Leg 52mm High	2	M123
7	M10 Flat Washer	2	W022
8	M10 Shakeproof Washer	2	W021
9	M10 x 20 Hex Screw	2	B003
10	RCP Sliding Mounting Pad	2	M508
11	M6 x 25mm Hex Screw	4	B067
12	RCP Fixed Pad	2	M507
13	M6 Curved Cast Nut	2	N060
14	RCP Curved Nut Retainer	2	M510
15	PVC Foam Block	2	C135
16	5mm Security Key	1	H021
17	Canopy Lower Pad	2	M088
18	M6 Flat Washer	4	W031
19	M6 Nyloc Nut	4	N013
20	Canopy Lower Pad Insert	2	M089
21	Fitting Instruction	1	R151



^ Holes need to be drilled for M6 hex screw
 * Needs to be cut to suit the RCP Fixed Pad

Tools Required

Stanley knife, Marking pen, Masking tape, Centre punch, Power or cordless drill, 6.5mm drill bit, Drill stop, Vacuum cleaner, Pneumatic or concertina type rivet gun, Galvanised paint, Selleys Butyl Mastic, Measuring tape, 16mm or 5/8" spanner





RFMPC2 Rhino Fixed Mount Canopy System (with RLCP leg)

3

Open up the holes with a 6.5mm drill bit

15

4

Assemble legs

5 Mask the roof area with masking tape and mark where you want to position the legs at.

Minimum 650mm

Minimum 650mm

Ensure bars are square, parallel and evenly spread. Pads to be positioned on the strongest part of the roof.

EQUAL OVERHANG DISTANCE

6

Disassemble legs

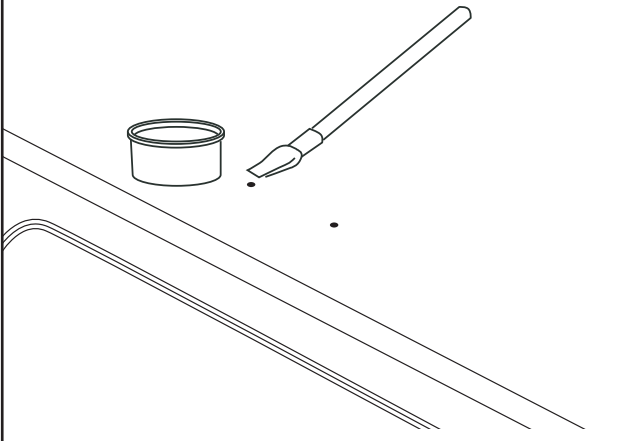
7 Drill the holes carefully (see step 8 for details), make sure that you vacuum the excess swarf from the roof

Drill stop must be used to prevent damage to hood lining or air bags

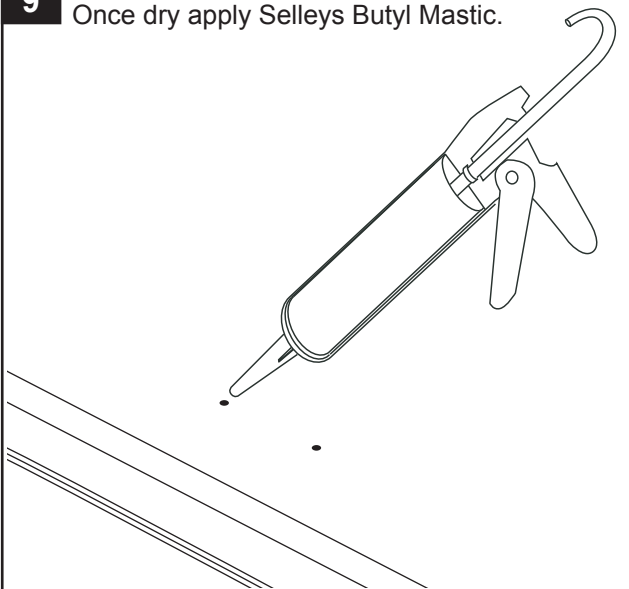


RFMPC2 Rhino Fixed Mount Canopy System (with RLCP leg)

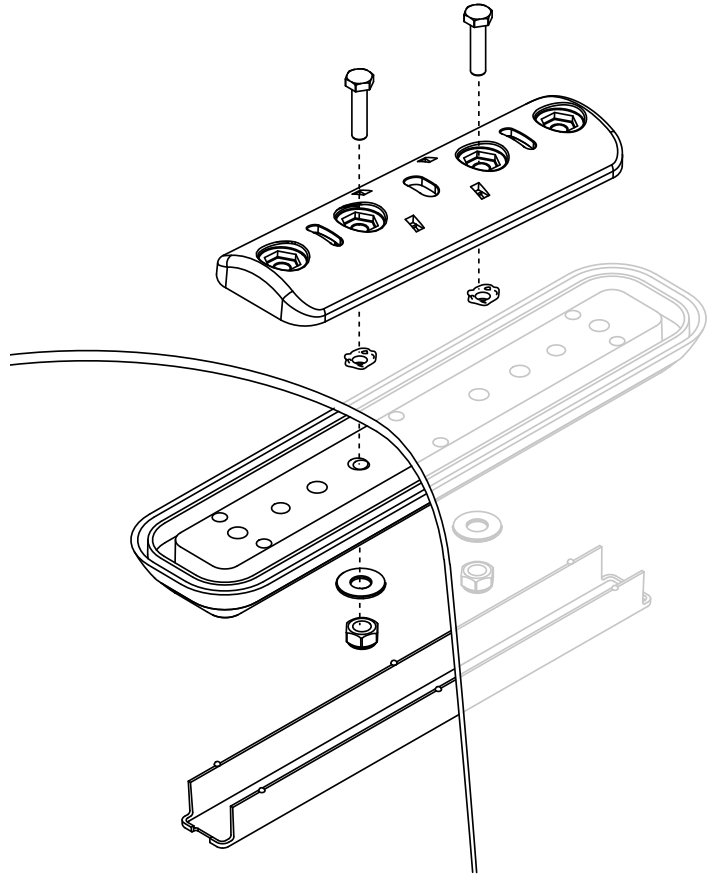
8 Apply cold galvanising paint around holes.



9 Once dry apply Selleys Butyl Mastic.



10 Assemble the canopy lower pad as shown.



11 Attach crossbars to pads as shown. Tighten bolt to 3-4Nm. Ensure that the overhang on both ends are equal.

